

Modernized Froriep boring & milling machine

Model OFB 160



Equipped With

- A right-angled milling head permanently fitted to the underslung ram.
- A universal milling head to be loaded onto the main ram with a manual attachment changing system.
- A new 2-axis rotary table fully integrated as a 6th and 7th axe.
- New Fancu 31i CNC system capable of controlling 7 axes, which two axes control the rotational and linear axes of the 2-axis rotary table.
- A set of telescopic covers on the main bed on both sides of the column.
- A flood coolant system with new pump and tank.
- The original operator platform.
- A set of 8 off T-slotted floor plates measuring 10.8 x 5.4 meter in total.
- A full-length chip conveyor (new in 2009).

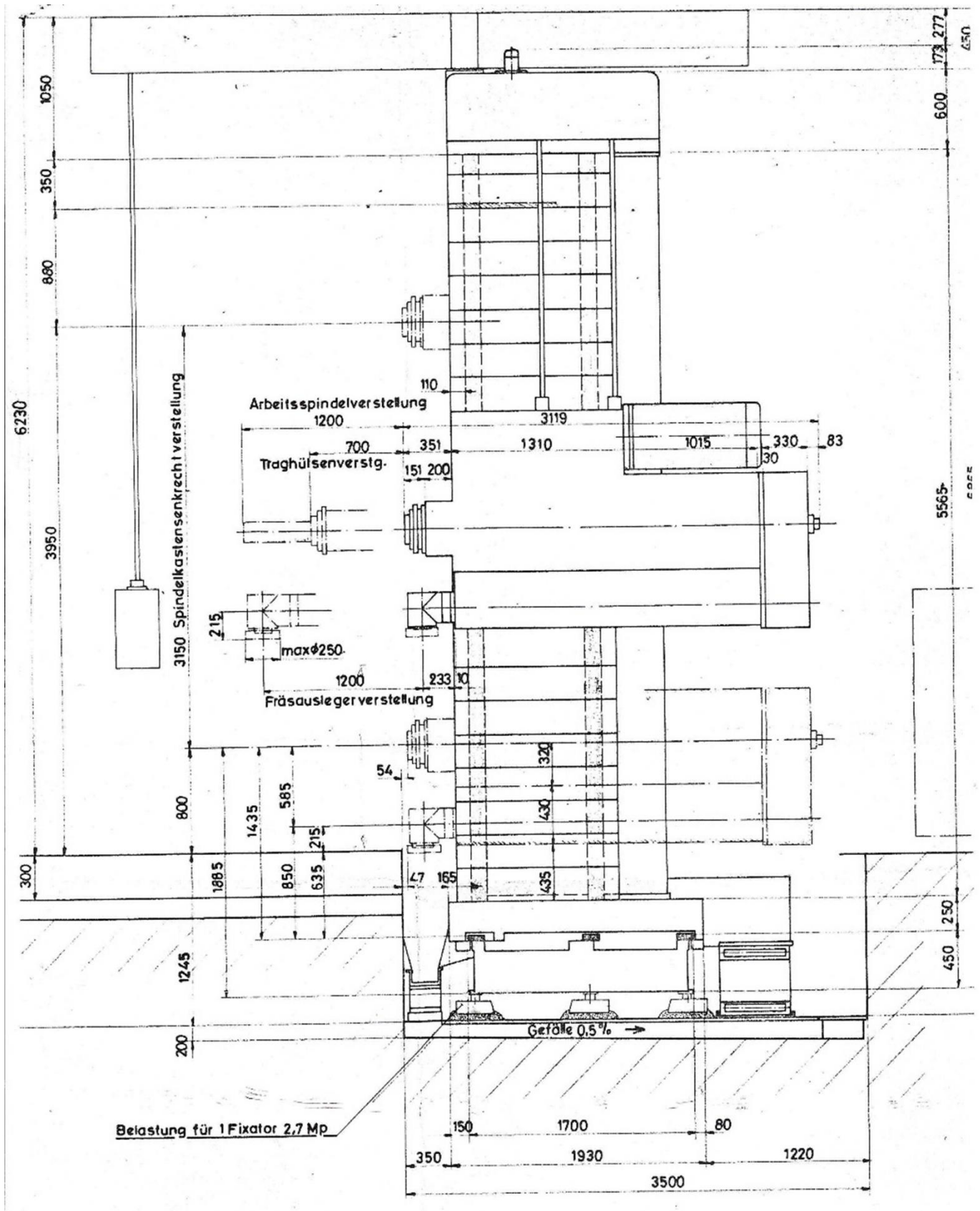


Specifications - Froriep

Description	
Longtravel (X-axis)	10000 mm
Vertical travel (Y-axis)	3150 mm
Ram stroke (Z-axis)	700 mm
Boring spindle stroke (W-axis)	1200 mm
Underslung ram stroke (W2-axis)	1200 mm
Boring spindle diameter	160 mm
Spindle taper of milling head	ISO 50
Main motor power	50 kW
Spindle speed range	1.6 – 1000 rpm
Axis feed rate	0 – 3 m/min
Axis rapid rates	4 m/min
Total machine weight	55 tons
Floor plate area (8 separate floor plates)	10.8 x 5.4 meter
Year of original manufacture	1973
Year of CNC retrofit	2019



Froriep Layout

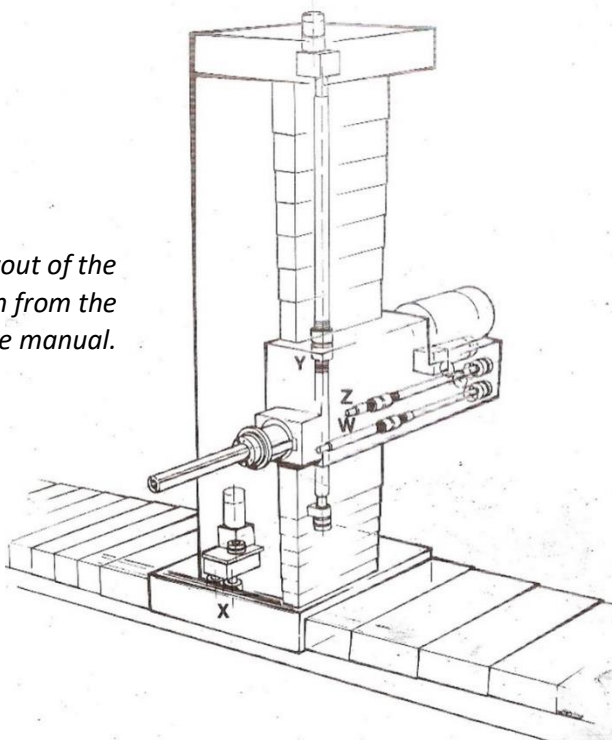


The machine axes are defined as follows

Axis layout of basic machine

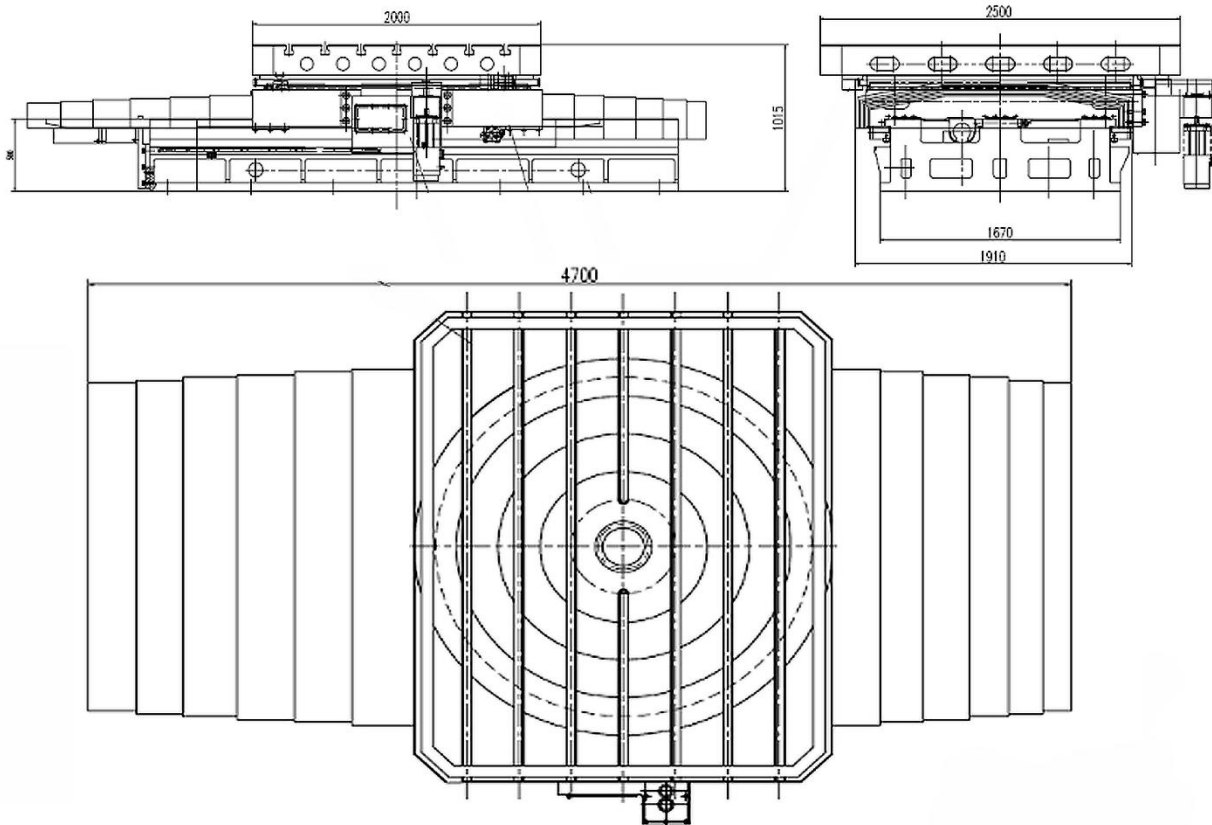
Description of axis	Type of axis	Method of measurement feedback
1. Long travel of column (X-axis)	Full CNC axis, with digital servo motor driving double pinion on rack through low-backlash drive train.	Motor encoder feedback
2. Vertical travel of headstock (Y-axis)	Full CNC axis, with digital servo motor driving precision-ground ball screw through low-backlash drive train	Motor encoder feedback
3. Axial stroke of ram (Z-axis)	Full CNC axis, with digital servomotor driving ballscrew thru low-backlash gearbox.	Motor encoder feedback
4. Axial stroke of boring spindle (W-axis)	Full CNC axis, with digital servomotor driving ballscrew thru low-backlash gearbox	Motor encoder feedback
5. Axial stroke of underslung ram (W2-axis)	Full CNC axis, with digital servomotor driving ballscrew thru low-backlash gearbox.	Motor encoder feedback
6. Main spindle	Spindle motor driving boring spindle through headstock drive train	Rotary encoder feedback, with accurate spindle orientation for rigid tapping and feed/rev.
7. Underslung ram milling head	Spindle motor driving milling head through ram drive train	Motor feedback only

Basic axis layout of the machine, as taken from the original machine manual.



Specifications - 2-axis Rotary Table

Description	
Load capacity	20 tons
V-axis stroke	1200mm
Table surface	2500 x 2000mm
Rotational speed	0.001 – 0.05 rpm
Linear feed rate	2.5 – 150 mm/min
Rapid rate of V	2 m/min



Pictures



